

**4/5/Study
Bedroom
2 Bath**

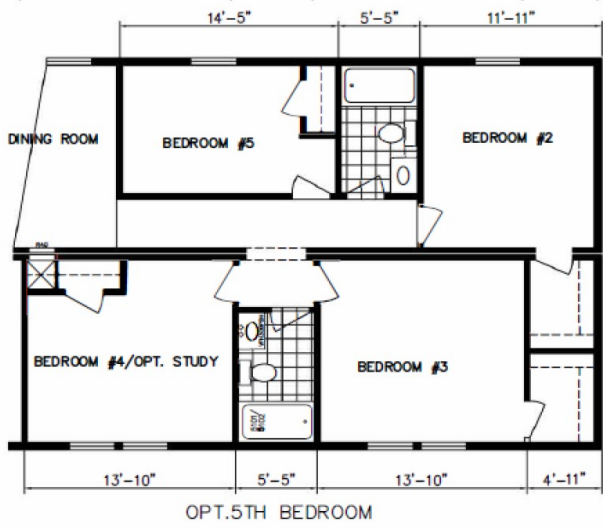
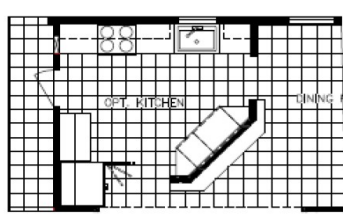
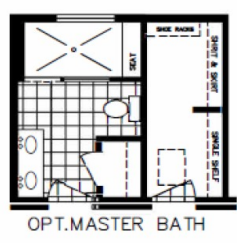
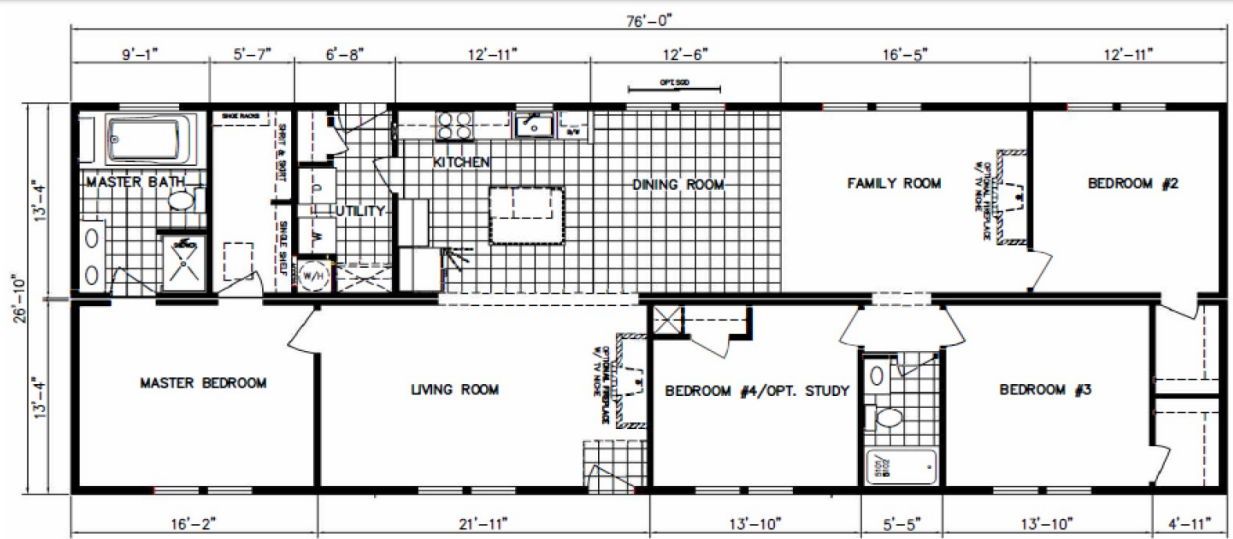


**4046 US Hwy 70 East
Goldsboro NC 27534
919-751-1986 Office
919-751-1753 Fax
38Yrs in Business**

Our TRUE TURN KEY Price Includes:
Footers, Brick Foundation, Crane Set, Trim, Heat Pump, Permits, Electrical, Plumbing, Vapor Barrier, Termite treatment, & Back Fill Foundation

Www.ModernHousing.Net

HBS "Preferred" Series



Artist Rendering Standard Kitchen. Consult Your Salesman for Information.



Elevation Shown with Optional and On-Site Dealer Supplied Items. Consult Your Salesman for Pricing.



Castle Pines
 Model 7628C HBSP R
 Approx. 2039 Sq.Ft.