

3/4 Bedroom
2 Bath
1824 Sq. Ft.



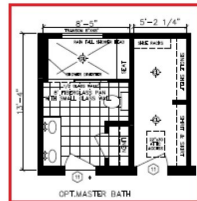
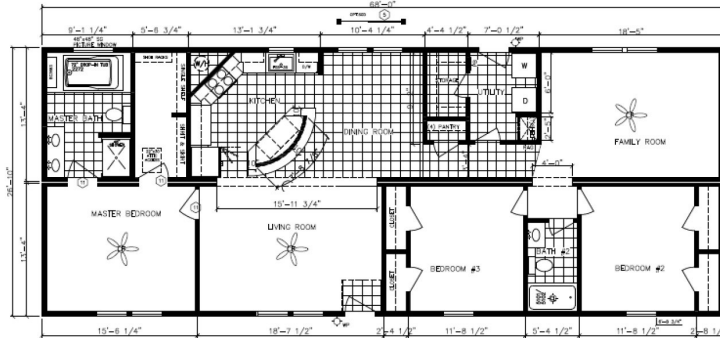
4046 US Hwy 70 East
Goldsboro NC 27534
919-751-1986 Office
919-751-1753 Fax
38Yrs in Business

Our **TRUE TURN KEY** Price
Includes: Crane Set, Trim, Heat Pump, Building Permits, Electrical, Plumbing, Vapor Barrier, Termite treatment, Back Fill Foundation, Brick Foundation & Steps.

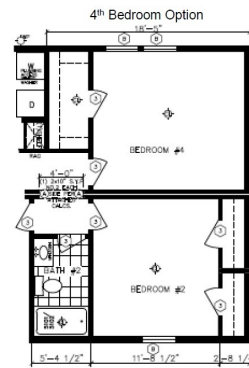
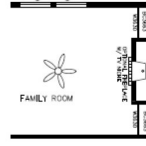
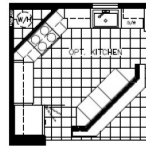
4046 US Hwy 70 East
Goldsboro NC 27534
919-751-1986 Office
919-751-1753 Fax

www.ModernHousing.net

The Cypress Point



Optional Bath Included In Stock Model



Cypress Point

Model 6828A HBSP R
 Approx. 1824 Sq.Ft.

